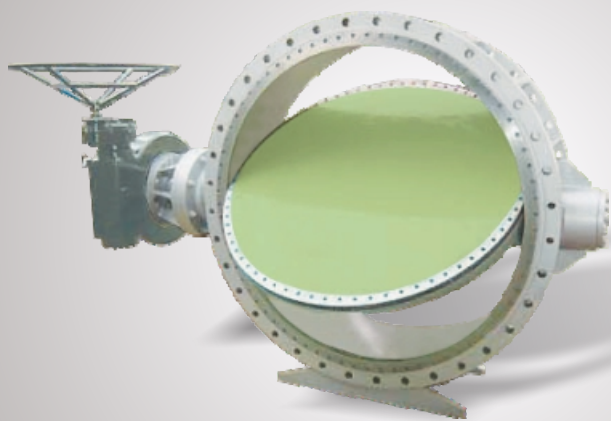


## HIGH PERFORMANCE Butterfly Valves



### SERIES BD



900mm LCC Valves Supplied to Kazakhstan

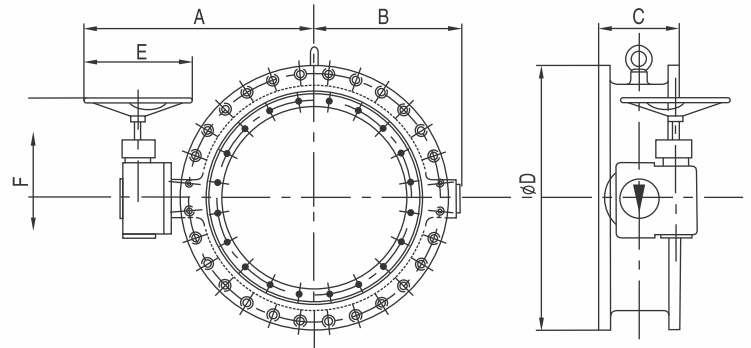
- Advance is the leader in the manufacture of high performance valves, offering a comprehensive range of elastomer.
- Butterfly valves are manufactured in sizes from DN 80 to DN 3000 with models, pressure rated from 10 to 25 Bar.
- Butterfly valves are available in Wafer, Lug-Type, Fully Flanged & Lined configurations.
- Flange drilling can accommodate BS 4504, DIN 2631/2/3/4 as well as ASME B 16.5, ANSI B 16.47 (A), API 605 (A), AWWA C207, IS 6392 and IS 1538.
- Elastomer-seal valves operate on the double off-set principle.

# TECHNICAL DATA

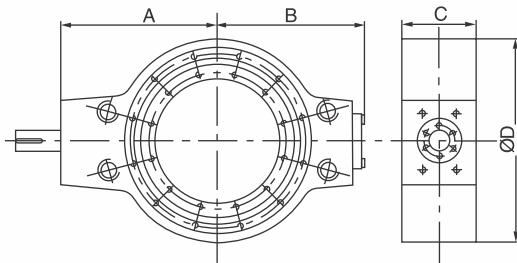
SIZE (DN)	PN10							PN16						
	A	B	C	D	E	F	WEIGHT (kg)	A	B	C	D	E	F	WEIGHT (kg)
300	435	270	178	445	250	200	121	455	275	178	460	250	200	123
350	515	295	190	505	350	205	159	535	305	190	520	350	205	176
400	500	325	216	565	250	290	214	600	325	216	580	450	310	213
450	590	222	615	350	295	238	655	395	222	640	650	350	295	422
500	675	390	229	670	450	310	305	733	390	229	715	450	310	469
600	715	435	267	780	350	295	433	795	455	267	840	450	330	660
700	820	495	292	895	450	330	633	915	500	292	910	600	360	803
800	825	555	318	1015	450	300	845	945	560	318	1025	450	380	1070
900	970	610	330	1115	450	385	1194	1040	620	330	1125	600	440	1607
1000	1090	695	410	1230	450	400	1632	1100	685	410	1255	450	480	2035
1200	1265	795	470	1455	600	440	2150	1340	800	470	1485	600	510	2580
1400	1340	920	530	1675	600	520	3510	1390	940	530	1685	600	615	4210
1600	1460	1040	600	1915	600	520	5320	1560	1060	600	1930	600	615	6380
1800	1630	1170	670	2115	600	615	6200	1750	1190	670	2130	600	735	7440
2000	1740	1270	760	2325	600	615	7300	1860	1290	760	2345	600	735	9125

SPECIAL SIZES AVAILABLE ON REQUEST

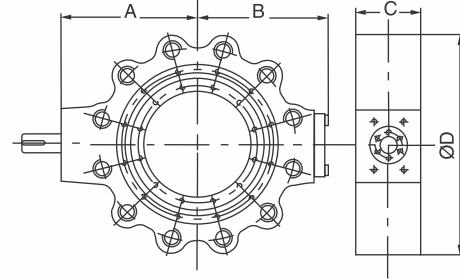
## Fully Flanged PN10, PN16 & PN25



## WAFER PN10, PN16 & PN25



## LUGGED PN10, PN16 & PN25

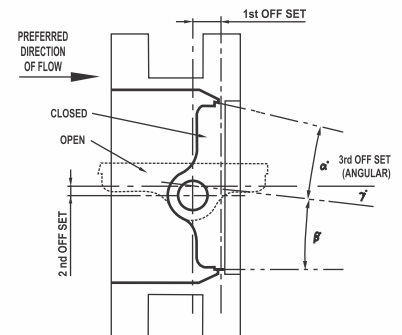


SIZE (DN)	PN10					PN16						
	A	B	C	D	WEIGHT (kg)	(kg) LUGGED	A	B	C	D	WEIGHT (kg)	(kg) LUGGED
80	120	110	64	135	11	19	120	110	64	135	11	19
100	130	120	64	155	12	20	130	120	64	155	12	20
150	170	145	76	210	23	29	170	145	76	210	23	29
200	200	190	89	265	33	52	200	190	89	265	33	52
250	230	220	114	320	43	75	230	220	114	320	44	77
300	275	250	114	370	75	102	275	250	114	370	80	105
350	280	270	127	430	90	125	280	270	127	435	96	142
400	330	300	140	480	107	142	330	300	140	480	121	175
450	370	340	152	530	125	160	380	360	152	545	145	198
500	400	350	152	585	162	200	420	385	152	610	184	231
600	500	460	178	685	198	250	500	470	178	725	242	288

OTHER SIZES AND PRESSURES AVAILABLE ON REQUEST

- Materials :** Cast Iron, Ductile Iron, Cast Steel, Stainless Steel, Carbon Steel, Nickel Alloys to ASTM / IS Standards, Nickel Aluminum Bronze
- Body and Disc :** Fabricated Carbon Steel, Cast Iron, Cast Steel, Stainless, Titanium. Nickel Alloys to ASTM / IS standards.
- Shaft:** Stainless Steel 431 (EN57), AISI 410, Monel, 17-4-PH, Duplex, Inconel, Titanium
- Bearing Bush :** Stellite, Nitrided Stainless Steel.
- Seals :** Nitrile, Buna N, Viton,
- Retaining Ring :** Plated Mild Steel, Stainless Steel.
- Actuation :** Advance valves are generally fitted with worm gearboxes for manual operation. hydraulic actuators to suit output drives in accordance with ISO 5211. They can be fitted with Electric, Pneumatic or Electro Hydraulic Actuators

## DOUBLE OFF-SET VALVE



• ADVANCE VALVES PVT. LTD. • ADVANCE VALVES GLOBAL LLP • ADVANCE VALVES SOLUTIONS

Corporate Office: 142, A&B, NSEZ, Phase-2, Noida – 201305, INDIA. Phone: +91 120 4796900, Fax: +91 120 4796948

